

About Town

Members of the Young Married Club at the South Methodist church will have an outing at Lake Hayward Saturday afternoon, June 23.

Mrs. and Mrs. Howard Clark and son Bruce of Worcester, Mass., will be the guests of Mrs. Ernest E. Reynolds of 70 Tanager street.

An all-day picnic of the combined Women's Home and Foreign Missionary societies of the South Methodist church will be held Thursday at the home of Mrs. Robert Richmond, 608 South Main street. The W. H. M. H. at its recent meeting elected Mrs. Minnie Legg, president; Mrs. Inez Trunk, secretary; and Mrs. Arthur Gibson, secretary.

Mrs. Bertha Pughman, superintendent of the Business department of the Second Congregational church school, announces a party for the children for tomorrow afternoon at 2 o'clock at the church.

The Young People's society of the Zion Lutheran church is planning a picnic at Columbia Lake for Saturday afternoon, June 23. Miss Laura Mathison and Miss Marie Jensen will be in charge.

Mrs. Sigma Chl meeting of the Second Congregational church will have an outdoor meeting Thursday evening at Camp Congo, South Windsor.

General Welfare Center No. 41 will meet tonight at 8 o'clock in the school room at 113 North Main street, Manchester. Center No. 41 will meet tomorrow evening at 8 o'clock in the school room at 113 North Main street.

Mrs. and Mrs. Roger G. Williams of Tolland announce the birth of a son, John Almeron, on Thursday, June 20.

W.B.A. members are reminded of the state convention in Waterbury tomorrow, with headquarters at the Hotel Elton. Distinguished guests expected are Mrs. Jennie M. Little of Fort Huron, Mich. and Mrs. E. J. Ketch of New York.

General Welfare Center No. 41 will meet tonight at 8 o'clock in the school room at 113 North Main street, Manchester. Center No. 41 will meet tomorrow evening at 8 o'clock in the school room at 113 North Main street.

Mrs. and Mrs. Roger G. Williams of Tolland announce the birth of a son, John Almeron, on Thursday, June 20.

W.B.A. members are reminded of the state convention in Waterbury tomorrow, with headquarters at the Hotel Elton. Distinguished guests expected are Mrs. Jennie M. Little of Fort Huron, Mich. and Mrs. E. J. Ketch of New York.

Mrs. and Mrs. Roger G. Williams of Tolland announce the birth of a son, John Almeron, on Thursday, June 20.

W.B.A. members are reminded of the state convention in Waterbury tomorrow, with headquarters at the Hotel Elton. Distinguished guests expected are Mrs. Jennie M. Little of Fort Huron, Mich. and Mrs. E. J. Ketch of New York.

Mrs. and Mrs. Roger G. Williams of Tolland announce the birth of a son, John Almeron, on Thursday, June 20.

W.B.A. members are reminded of the state convention in Waterbury tomorrow, with headquarters at the Hotel Elton. Distinguished guests expected are Mrs. Jennie M. Little of Fort Huron, Mich. and Mrs. E. J. Ketch of New York.

Mrs. and Mrs. Roger G. Williams of Tolland announce the birth of a son, John Almeron, on Thursday, June 20.

W.B.A. members are reminded of the state convention in Waterbury tomorrow, with headquarters at the Hotel Elton. Distinguished guests expected are Mrs. Jennie M. Little of Fort Huron, Mich. and Mrs. E. J. Ketch of New York.

Mrs. and Mrs. Roger G. Williams of Tolland announce the birth of a son, John Almeron, on Thursday, June 20.

W.B.A. members are reminded of the state convention in Waterbury tomorrow, with headquarters at the Hotel Elton. Distinguished guests expected are Mrs. Jennie M. Little of Fort Huron, Mich. and Mrs. E. J. Ketch of New York.

Mrs. and Mrs. Roger G. Williams of Tolland announce the birth of a son, John Almeron, on Thursday, June 20.

W.B.A. members are reminded of the state convention in Waterbury tomorrow, with headquarters at the Hotel Elton. Distinguished guests expected are Mrs. Jennie M. Little of Fort Huron, Mich. and Mrs. E. J. Ketch of New York.

Mrs. and Mrs. Roger G. Williams of Tolland announce the birth of a son, John Almeron, on Thursday, June 20.

W.B.A. members are reminded of the state convention in Waterbury tomorrow, with headquarters at the Hotel Elton. Distinguished guests expected are Mrs. Jennie M. Little of Fort Huron, Mich. and Mrs. E. J. Ketch of New York.

Mrs. and Mrs. Roger G. Williams of Tolland announce the birth of a son, John Almeron, on Thursday, June 20.

W.B.A. members are reminded of the state convention in Waterbury tomorrow, with headquarters at the Hotel Elton. Distinguished guests expected are Mrs. Jennie M. Little of Fort Huron, Mich. and Mrs. E. J. Ketch of New York.

Finish Plans For Festival

The Women's League of the Baptist church will hold its annual festival at Camp Nathan, Halloway, Conn., June 23. Dinner will be served about noon at the lake. A bus will leave from the church at 11 o'clock, and it is important that Mrs. James Munroe, Jr., 214 1/2 St. Paul, William Hall, 5166, come definitely by tonight. Just how many are going will be determined by the time the bus leaves. An interesting program is being arranged for the afternoon and evening.

Start Work Soon On School Changes

Plans for the changes in the location of the school building at the top of the hill will be completed by the end of the month. The new building will be located at the north end of what is now the assembly hall and the stage will be moved to the south end of the building and a smaller assembly hall will be located at the top of the hill. The plan to make changes in the basement for the installation of a new boiler room and a change over from coal to oil in the heating of the school, will not be made this year.

Serve Shortcake At Weekly Party

Strawberry shortcake will be served again Saturday evening following the weekly card party at the home of Mrs. C. I. Loomis, 113 North Main street. The chairman and every member of the Mesquite Social Club desire to express appreciation to Fred Loomis, who furnished the berries from his own garden; also to Mrs. William Bray who baked the shortcake; to Truman and Sons who donated the cream, and all who helped make the affair so special a success that it was a winners last evening. Mrs. C. I. Loomis, Mrs. Marie Croft and James Foster, all of this town.

Safe Fur Storage

Safe - Dependable - Economical - Charges - 3% of Customer's Valuation - Minimum Charge \$2.50 - The J.W. HALE CORP. - 113 North Main Street - SEE VIEW MANOR - Crescent Beach, Conn. - Comfortable, fireproof, burglar proof and cold water. Home cooking. Write to Mrs. C. O. Johnson, 113 North Main Street, Springfield, Mass.

Buy KOPEK in the Val-U-Box

Members of the Army and Navy club auxiliary will please note all reservations for the outing, Wednesday, June 28, at 10 o'clock for the annual Credit Roll party at the church. Mrs. Balch would like to have the members of the club bring their own jewelry mite boxes returned at this party.

Roofing & Siding

Our Specialty - A. A. Dion, Inc. - 81 Wells St., Tel. 4860

White Time

It's Summer Time to Cool Your Head. Stripes and plain colors in navy, brown, white, 39c to 79c. Baby Shop

Grandmother's coming tomorrow - you'll have to sleep with sister!

When company comes to the Joneses, this gift must give up her room. Does that happen at your house because you need more room for living? Does your house need another bedroom, or some other improvement? Would you like to see how it could actually pay for itself? "How in Modernize and Make It Pay" is a valuable, new book of modernization ideas just published. It explains how you can enjoy the improvements you need - shows how they may pay for themselves.

White Handbags - Washable White - Metal Lawn Tables - AND SERVING TRAYS - \$1.98 to \$3.98 - White Enamelled Beach Chairs - With built-in seat and back strap of waterproof material. Plain colors only. \$3.98 \$4.98 \$5.98

Headquarters For G. E. Appliances and Ranges - The W. G. GLENNEY CO. - Coal, Lumber, Mason's Supplies, Paint - 256 No. Main St. Tel. 1168 - Manchester

Berry Prices Up on Market

The average price paid for strawberries in the Manchester Auction Market yesterday was 12.5 cents a quart for berries packed in 24 quarts to the crate and 11.5 cents a quart for berries packed in 16 quarts to the crate, with total sales amounting to \$7,650. Bidding was brisk, quality good and the supply larger than on any day since the market opened. R. M. Reid & Sons, auctioneers, announced after the sale. Sold yesterday were 1,838 crates in 24 quart crates for a high of \$3.70, a low of \$2.35 and an average of \$3. Also sold were 1,070 crates packed in 16 quarts to the crate for a high of \$2.50, a low of \$1.25 and an average of \$1.85. Also a few hundreds of pears, the first in the market, which brought \$1.50 a bushel. Sales this afternoon will be the last for the week as there will be no auction tomorrow, the block being closed until Sunday afternoon at 2 o'clock.

Start Painting Exteriors First

The WPA project approved for the interior painting of several of the schools in Manchester and the exterior painting of the police station and Municipal building, will start with the outside work. The painters will start on the exterior of the Municipal building, feeling that it is best to do that first and later on the weather is less favorable, the interior work will be begun. The work in the different schools will be started before the vacation period is ended and will be carried along with the least inconvenience to the pupils while the schools are in session in the fall and winter.

Sport Togs for Leisure or Outdoor Activity

Slack Sets \$1.98 to \$5.98 - Playsuits \$1.98 to \$7.98 - Slacks \$1.19 to \$3.98 - Beach Capes, Coats and Robes \$1.19 to \$3.98 - Children's Play Clothes \$1.19 to \$2.98

Washable Fabric Gloves \$1.00 pr. - All Metal Chairs \$2.98 \$3.98 - Heavy Metal Chairs \$5.98 \$6.50 \$10.50 - Folding Lawn Chairs \$2.98 - Cape Cod Chairs \$5.98 - Metal Lawn Tables \$1.98 to \$3.98 - White Enamelled Beach Chairs \$3.98 \$4.98 \$5.98

3 Day Hosiery Sale (Ends Saturday) Regular 69c - D. G. A. - Full fashioned, first quality Chiffon or Service weight - All new Summer shades. Sizes 8 1/2 to 10 1/2 - 66 Nipples \$1.00

Washable Fabric Gloves

Slip-on styles in 4 and 6 button lengths in white. Lace trim or plain backs. \$1.00 pr.

All Metal Chairs

With tubular frame. \$2.98 \$3.98 - Heavy Metal Chairs \$5.98 \$6.50 \$10.50 - Folding Lawn Chairs \$2.98 - Cape Cod Chairs \$5.98 - Metal Lawn Tables \$1.98 to \$3.98 - White Enamelled Beach Chairs \$3.98 \$4.98 \$5.98

State Troopers' Raid of Gaming House Seen As 'Honeymoon' End

New Orleans, June 22.—(AP)—Suspension of the police raid on Louisiana's new reform administration and the city of New Orleans French quarter yesterday, was hailed today in the wake of two gambling raids by state troopers and a sudden shake-up of city police.

Butler, Noted General, Dies

Fighting Quaker, Famous as Marine Leader, Passes Away at 58. Philadelphia, June 22.—(AP)—Blunt, outspoken Maj. Gen. Samuel D. Butler, a "fighting Quaker" who spent 30 of his 58 years in the United States Marine Corps, died yesterday.

New Orleans Treaty Shaky

State Troopers' Raid of Gaming House Seen As 'Honeymoon' End. New Orleans, June 22.—(AP)—Suspension of the police raid on Louisiana's new reform administration and the city of New Orleans French quarter yesterday, was hailed today in the wake of two gambling raids by state troopers and a sudden shake-up of city police.

Berry Prices Up on Market

The average price paid for strawberries in the Manchester Auction Market yesterday was 12.5 cents a quart for berries packed in 24 quarts to the crate and 11.5 cents a quart for berries packed in 16 quarts to the crate, with total sales amounting to \$7,650. Bidding was brisk, quality good and the supply larger than on any day since the market opened. R. M. Reid & Sons, auctioneers, announced after the sale. Sold yesterday were 1,838 crates in 24 quart crates for a high of \$3.70, a low of \$2.35 and an average of \$3. Also sold were 1,070 crates packed in 16 quarts to the crate for a high of \$2.50, a low of \$1.25 and an average of \$1.85. Also a few hundreds of pears, the first in the market, which brought \$1.50 a bushel. Sales this afternoon will be the last for the week as there will be no auction tomorrow, the block being closed until Sunday afternoon at 2 o'clock.

Start Painting Exteriors First

The WPA project approved for the interior painting of several of the schools in Manchester and the exterior painting of the police station and Municipal building, will start with the outside work. The painters will start on the exterior of the Municipal building, feeling that it is best to do that first and later on the weather is less favorable, the interior work will be begun. The work in the different schools will be started before the vacation period is ended and will be carried along with the least inconvenience to the pupils while the schools are in session in the fall and winter.

Sport Togs for Leisure or Outdoor Activity

Slack Sets \$1.98 to \$5.98 - Playsuits \$1.98 to \$7.98 - Slacks \$1.19 to \$3.98 - Beach Capes, Coats and Robes \$1.19 to \$3.98 - Children's Play Clothes \$1.19 to \$2.98

Washable Fabric Gloves \$1.00 pr. - All Metal Chairs \$2.98 \$3.98 - Heavy Metal Chairs \$5.98 \$6.50 \$10.50 - Folding Lawn Chairs \$2.98 - Cape Cod Chairs \$5.98 - Metal Lawn Tables \$1.98 to \$3.98 - White Enamelled Beach Chairs \$3.98 \$4.98 \$5.98

3 Day Hosiery Sale (Ends Saturday) Regular 69c - D. G. A. - Full fashioned, first quality Chiffon or Service weight - All new Summer shades. Sizes 8 1/2 to 10 1/2 - 66 Nipples \$1.00

Washable Fabric Gloves

Slip-on styles in 4 and 6 button lengths in white. Lace trim or plain backs. \$1.00 pr.

All Metal Chairs

With tubular frame. \$2.98 \$3.98 - Heavy Metal Chairs \$5.98 \$6.50 \$10.50 - Folding Lawn Chairs \$2.98 - Cape Cod Chairs \$5.98 - Metal Lawn Tables \$1.98 to \$3.98 - White Enamelled Beach Chairs \$3.98 \$4.98 \$5.98

State Troopers' Raid of Gaming House Seen As 'Honeymoon' End

New Orleans, June 22.—(AP)—Suspension of the police raid on Louisiana's new reform administration and the city of New Orleans French quarter yesterday, was hailed today in the wake of two gambling raids by state troopers and a sudden shake-up of city police.

Butler, Noted General, Dies

Fighting Quaker, Famous as Marine Leader, Passes Away at 58. Philadelphia, June 22.—(AP)—Blunt, outspoken Maj. Gen. Samuel D. Butler, a "fighting Quaker" who spent 30 of his 58 years in the United States Marine Corps, died yesterday.

New Orleans Treaty Shaky

State Troopers' Raid of Gaming House Seen As 'Honeymoon' End. New Orleans, June 22.—(AP)—Suspension of the police raid on Louisiana's new reform administration and the city of New Orleans French quarter yesterday, was hailed today in the wake of two gambling raids by state troopers and a sudden shake-up of city police.

Berry Prices Up on Market

The average price paid for strawberries in the Manchester Auction Market yesterday was 12.5 cents a quart for berries packed in 24 quarts to the crate and 11.5 cents a quart for berries packed in 16 quarts to the crate, with total sales amounting to \$7,650. Bidding was brisk, quality good and the supply larger than on any day since the market opened. R. M. Reid & Sons, auctioneers, announced after the sale. Sold yesterday were 1,838 crates in 24 quart crates for a high of \$3.70, a low of \$2.35 and an average of \$3. Also sold were 1,070 crates packed in 16 quarts to the crate for a high of \$2.50, a low of \$1.25 and an average of \$1.85. Also a few hundreds of pears, the first in the market, which brought \$1.50 a bushel. Sales this afternoon will be the last for the week as there will be no auction tomorrow, the block being closed until Sunday afternoon at 2 o'clock.

Start Painting Exteriors First

The WPA project approved for the interior painting of several of the schools in Manchester and the exterior painting of the police station and Municipal building, will start with the outside work. The painters will start on the exterior of the Municipal building, feeling that it is best to do that first and later on the weather is less favorable, the interior work will be begun. The work in the different schools will be started before the vacation period is ended and will be carried along with the least inconvenience to the pupils while the schools are in session in the fall and winter.

Sport Togs for Leisure or Outdoor Activity

Slack Sets \$1.98 to \$5.98 - Playsuits \$1.98 to \$7.98 - Slacks \$1.19 to \$3.98 - Beach Capes, Coats and Robes \$1.19 to \$3.98 - Children's Play Clothes \$1.19 to \$2.98

Washable Fabric Gloves \$1.00 pr. - All Metal Chairs \$2.98 \$3.98 - Heavy Metal Chairs \$5.98 \$6.50 \$10.50 - Folding Lawn Chairs \$2.98 - Cape Cod Chairs \$5.98 - Metal Lawn Tables \$1.98 to \$3.98 - White Enamelled Beach Chairs \$3.98 \$4.98 \$5.98

3 Day Hosiery Sale (Ends Saturday) Regular 69c - D. G. A. - Full fashioned, first quality Chiffon or Service weight - All new Summer shades. Sizes 8 1/2 to 10 1/2 - 66 Nipples \$1.00

Washable Fabric Gloves

Slip-on styles in 4 and 6 button lengths in white. Lace trim or plain backs. \$1.00 pr.

All Metal Chairs

With tubular frame. \$2.98 \$3.98 - Heavy Metal Chairs \$5.98 \$6.50 \$10.50 - Folding Lawn Chairs \$2.98 - Cape Cod Chairs \$5.98 - Metal Lawn Tables \$1.98 to \$3.98 - White Enamelled Beach Chairs \$3.98 \$4.98 \$5.98

State Troopers' Raid of Gaming House Seen As 'Honeymoon' End

New Orleans, June 22.—(AP)—Suspension of the police raid on Louisiana's new reform administration and the city of New Orleans French quarter yesterday, was hailed today in the wake of two gambling raids by state troopers and a sudden shake-up of city police.

Butler, Noted General, Dies

Fighting Quaker, Famous as Marine Leader, Passes Away at 58. Philadelphia, June 22.—(AP)—Blunt, outspoken Maj. Gen. Samuel D. Butler, a "fighting Quaker" who spent 30 of his 58 years in the United States Marine Corps, died yesterday.

New Orleans Treaty Shaky

State Troopers' Raid of Gaming House Seen As 'Honeymoon' End. New Orleans, June 22.—(AP)—Suspension of the police raid on Louisiana's new reform administration and the city of New Orleans French quarter yesterday, was hailed today in the wake of two gambling raids by state troopers and a sudden shake-up of city police.

Berry Prices Up on Market

The average price paid for strawberries in the Manchester Auction Market yesterday was 12.5 cents a quart for berries packed in 24 quarts to the crate and 11.5 cents a quart for berries packed in 16 quarts to the crate, with total sales amounting to \$7,650. Bidding was brisk, quality good and the supply larger than on any day since the market opened. R. M. Reid & Sons, auctioneers, announced after the sale. Sold yesterday were 1,838 crates in 24 quart crates for a high of \$3.70, a low of \$2.35 and an average of \$3. Also sold were 1,070 crates packed in 16 quarts to the crate for a high of \$2.50, a low of \$1.25 and an average of \$1.85. Also a few hundreds of pears, the first in the market, which brought \$1.50 a bushel. Sales this afternoon will be the last for the week as there will be no auction tomorrow, the block being closed until Sunday afternoon at 2 o'clock.

Start Painting Exteriors First

The WPA project approved for the interior painting of several of the schools in Manchester and the exterior painting of the police station and Municipal building, will start with the outside work. The painters will start on the exterior of the Municipal building, feeling that it is best to do that first and later on the weather is less favorable, the interior work will be begun. The work in the different schools will be started before the vacation period is ended and will be carried along with the least inconvenience to the pupils while the schools are in session in the fall and winter.

Sport Togs for Leisure or Outdoor Activity

Slack Sets \$1.98 to \$5.98 - Playsuits \$1.98 to \$7.98 - Slacks \$1.19 to \$3.98 - Beach Capes, Coats and Robes \$1.19 to \$3.98 - Children's Play Clothes \$1.19 to \$2.98

Washable Fabric Gloves \$1.00 pr. - All Metal Chairs \$2.98 \$3.98 - Heavy Metal Chairs \$5.98 \$6.50 \$10.50 - Folding Lawn Chairs \$2.98 - Cape Cod Chairs \$5.98 - Metal Lawn Tables \$1.98 to \$3.98 - White Enamelled Beach Chairs \$3.98 \$4.98 \$5.98

3 Day Hosiery Sale (Ends Saturday) Regular 69c - D. G. A. - Full fashioned, first quality Chiffon or Service weight - All new Summer shades. Sizes 8 1/2 to 10 1/2 - 66 Nipples \$1.00

Washable Fabric Gloves

Slip-on styles in 4 and 6 button lengths in white. Lace trim or plain backs. \$1.00 pr.

All Metal Chairs

With tubular frame. \$2.98 \$3.98 - Heavy Metal Chairs \$5.98 \$6.50 \$10.50 - Folding Lawn Chairs \$2.98 - Cape Cod Chairs \$5.98 - Metal Lawn Tables \$1.98 to \$3.98 - White Enamelled Beach Chairs \$3.98 \$4.98 \$5.98

State Troopers' Raid of Gaming House Seen As 'Honeymoon' End

New Orleans, June 22.—(AP)—Suspension of the police raid on Louisiana's new reform administration and the city of New Orleans French quarter yesterday, was hailed today in the wake of two gambling raids by state troopers and a sudden shake-up of city police.

Butler, Noted General, Dies

Fighting Quaker, Famous as Marine Leader, Passes Away at 58. Philadelphia, June 22.—(AP)—Blunt, outspoken Maj. Gen. Samuel D. Butler, a "fighting Quaker" who spent 30 of his 58 years in the United States Marine Corps, died yesterday.

New Orleans Treaty Shaky

State Troopers' Raid of Gaming House Seen As 'Honeymoon' End. New Orleans, June 22.—(AP)—Suspension of the police raid on Louisiana's new reform administration and the city of New Orleans French quarter yesterday, was hailed today in the wake of two gambling raids by state troopers and a sudden shake-up of city police.

Berry Prices Up on Market

The average price paid for strawberries in the Manchester Auction Market yesterday was 12.5 cents a quart for berries packed in 24 quarts to the crate and 11.5 cents a quart for berries packed in 16 quarts to the crate, with total sales amounting to \$7,650. Bidding was brisk, quality good and the supply larger than on any day since the market opened. R. M. Reid & Sons, auctioneers, announced after the sale. Sold yesterday were 1,838 crates in 24 quart crates for a high of \$3.70, a low of \$2.35 and an average of \$3. Also sold were 1,070 crates packed in 16 quarts to the crate for a high of \$2.50, a low of \$1.25 and an average of \$1.85. Also a few hundreds of pears, the first in the market, which brought \$1.50 a bushel. Sales this afternoon will be the last for the week as there will be no auction tomorrow, the block being closed until Sunday afternoon at 2 o'clock.

Start Painting Exteriors First

The WPA project approved for the interior painting of several of the schools in Manchester and the exterior painting of the police station and Municipal building, will start with the outside work. The painters will start on the exterior of the Municipal building, feeling that it is best to do that first and later on the weather is less favorable, the interior work will be begun. The work in the different schools will be started before the vacation period is ended and will be carried along with the least inconvenience to the pupils while the schools are in session in the fall and winter.

Sport Togs for Leisure or Outdoor Activity

Slack Sets \$1.98 to \$5.98 - Playsuits \$1.98 to \$7.98 - Slacks \$1.19 to \$3.98 - Beach Capes, Coats and Robes \$1.19 to \$3.98 - Children's Play Clothes \$1.19 to \$2.98

Washable Fabric Gloves \$1.00 pr. - All Metal Chairs \$2.98 \$3.98 - Heavy Metal Chairs \$5.98 \$6.50 \$10.50 - Folding Lawn Chairs \$2.98 - Cape Cod Chairs \$5.98 - Metal Lawn Tables \$1.98 to \$3.98 - White Enamelled Beach Chairs \$3.98 \$4.98 \$5.98

3 Day Hosiery Sale (Ends Saturday) Regular 69c - D. G. A. - Full fashioned, first quality Chiffon or Service weight - All new Summer shades. Sizes 8 1/2 to 10 1/2 - 66 Nipples \$1.00

Washable Fabric Gloves

Slip-on styles in 4 and 6 button lengths in white. Lace trim or plain backs. \$1.00 pr.

All Metal Chairs

With tubular frame. \$2.98 \$3.98 - Heavy Metal Chairs \$5.98 \$6.50 \$10.50 - Folding Lawn Chairs \$2.98 - Cape Cod Chairs \$5.98 - Metal Lawn Tables \$1.98 to \$3.98 - White Enamelled Beach Chairs \$3.98 \$4.98 \$5.98

State Troopers' Raid of Gaming House Seen As 'Honeymoon' End

New Orleans, June 22.—(AP)—Suspension of the police raid on Louisiana's new reform administration and the city of New Orleans French quarter yesterday, was hailed today in the wake of two gambling raids by state troopers and a sudden shake-up of city police.

Butler, Noted General, Dies

Fighting Quaker, Famous as Marine Leader, Passes Away at 58. Philadelphia, June 22.—(AP)—Blunt, outspoken Maj. Gen. Samuel D. Butler, a "fighting Quaker" who spent 30 of his 58 years in the United States Marine Corps, died yesterday.

New Orleans Treaty Shaky

State Troopers' Raid of Gaming House Seen As 'Honeymoon' End. New Orleans, June 22.—(AP)—Suspension of the police raid on Louisiana's new reform administration and the city of New Orleans French quarter yesterday, was hailed today in the wake of two gambling raids by state troopers and a sudden shake-up of city police.

Berry Prices Up on Market

The average price paid for strawberries in the Manchester Auction Market yesterday was 12.5 cents a quart for berries packed in 24 quarts to the crate and 11.5 cents a quart for berries packed in 16 quarts to the crate, with total sales amounting to \$7,650. Bidding was brisk, quality good and the supply larger than on any day since the market opened. R. M. Reid & Sons, auctioneers, announced after the sale. Sold yesterday were 1,838 crates in 24 quart crates for a high of \$3.70, a low of \$2.35 and an average of \$3. Also sold were 1,070 crates packed in 16 quarts to the crate for a high of \$2.50, a low of \$1.25 and an average of \$1.85. Also a few hundreds of pears, the first in the market, which brought \$1.50 a bushel. Sales this afternoon will be the last for the week as there will be no auction tomorrow, the block being closed until Sunday afternoon at 2 o'clock.

Start Painting Exteriors First

The WPA project approved for the interior painting of several of the schools in Manchester and the exterior painting of the police station and Municipal building, will start with the outside work. The painters will start on the exterior of the Municipal building, feeling that it is best to do that first and later on the weather is less favorable, the interior work will be begun. The work in the different schools will be started before the vacation period is ended and will be carried along with the least inconvenience to the pupils while the schools are in session in the fall and winter.

Sport Togs for Leisure or Outdoor Activity

Slack Sets \$1.98 to \$5.98 - Playsuits \$1.98 to \$7.98 - Slacks \$1.19 to \$3.98 - Beach Capes, Coats and Robes \$1.19 to \$3.98 - Children's Play Clothes \$1.19 to \$2.98

Washable Fabric Gloves \$1.00 pr. - All Metal Chairs \$2.98 \$3.98 - Heavy Metal Chairs \$5.98 \$6.50 \$10.50 - Folding Lawn Chairs \$2.98 - Cape Cod Chairs \$5.98 - Metal Lawn Tables \$1.98 to \$3.98 - White Enamelled Beach Chairs \$3.9

Hospital Fund \$12,000 Short

Emergency Meeting of Leaders This Morning Told Campaign May Be Failure Unless Final Canvass Arises Monday Night; Captains Hold Special Meeting This Noon.

In an eleventh hour attempt to obtain \$12,000 in additional subscriptions to complete the \$175,000 building fund for Manchester Memorial Hospital, C. Elmore Watkins, general chairman of the campaign, called together for an 8 o'clock emergency meeting this morning at the Sheridan hotel a dozen leaders in the campaign to discuss ways and means of completing the fund by next Monday night, the scheduled closing date of the building fund movement.

Chapman Court Closes Season

Sixty Members Enjoy An Old Fashioned Pot Luck Supper.

Sixty of the members of Chapman Court, Order of Amaranth, enjoyed the closing get-together of the season last night at the Masonic Temple. The program began with an old-fashioned "Pot Luck" supper, consisting of a variety of hot dishes, salads, cold meats, coffee and cake. The ladies were illuminated by old-fashioned kerosene lamps, the silverware stood upright in the spoonholders and other containers of long ago. The plates were wrong side up, and everything else that was placed on the table for the family-style meal.

Storms Expected On Foreign Stand, Aid Pledged Allies

Senator Nye, (R., N.D.), who told the Senate that it "seemed certain" the president had promised military assistance to France.

When the "terrible moment" to honor that pledge arrived, he asserted, the chief executive was "unable to deliver."

Rainbow Around Sun Visible in Manchester

Manchester people witnessed a strange solar phenomenon—a rainbow around the sun this morning at 11:25 a. m.

The Republican presidential candidate at Philadelphia last week, it was reported, had been seen in Manchester. It was first reported in Manchester, N. H., that the candidate had been seen in Manchester, N. H., on the other hand, Thomas E. Dewey, candidate for the Republican nomination, called the Hoosier speech at New York last night, he also charged that the president, "in his final presidential address," had "betrayed the trust of the American people."

Auction Sales Reach \$28,333

But Not a Record for a Week at Local Mart; Good Prices Prevail.

Total sales in the Manchester Auction Market for the first week, which closed last evening, reached \$28,333, the sixth year that the market has been conducted by R. M. Reid & Son, an auctioneer.

Scion and Sign Cheney-Olcott House Ruined By Fire Today

(Continued From Page One)

Fire steps between floors, the flames were breaking out under the roof of the third floor. It was not possible to enter the house in the hope of saving any of the furniture. With the connection made by No. 4 it made possible the lighting of the fire from all four sides. The fire abated it was extinguished on the first floor gave much more work for the firemen as it spread through the second floor. Leaders were raised, but the smoke that came from the windows drove the firemen back from the ladder.

Manchester Date Book

Tonight
Veterans' Carnival at Spruce and Maple streets.
Tomorrow
June 23—Dedication service of the South Methodist church, 7:30 p. m. Also banquet in vestry, 7:30 p. m.
June 24—Children's dedication service at 10:30 a. m. in the church.
Monday, June 25
Children's service at 10:30 a. m. in the church.
Tuesday, June 26
Children's service at 10:30 a. m. in the church.

Churches

Emmanuel Lutheran
Thorstein A. Gustafson, Pastor
8:30 a. m.—Sunday School and Bible Classes.
10:45 a. m.—Worship and sermon.
South Methodist Church
Earl E. Story, D.D., Minister
10:45 a. m.—Worship and sermon.
Second Congregational Church
Frederic C. Woodruff, Minister
10:45 a. m.—Worship and sermon.

News of Vets and Their Auxiliaries

Dilworth-Cornell
Cornell
No. 102
Unit Entertaining County Members
This evening Dilworth-Cornell unit will entertain the Hartford County Association for their regular monthly meeting.

New Jobs for Connecticut

Mayor Charles E. Moore takes the first bottle of a production line that will give jobs to 500 people in Connecticut at the official opening, Saturday, June 15, of the new North Warren plant in Stamford.

Monks-Pres Post B. W. V.

The Veterans' outdoor carnival which has been held over for a second week will be brought to a close with a matinee for the children at 2 p. m. this afternoon and the final show in the evening.

N.E. Council Ready For Reorganization

The Veterans' outdoor carnival which has been held over for a second week will be brought to a close with a matinee for the children at 2 p. m. this afternoon and the final show in the evening.

Anderson-Shea Auxiliary V. F. W.

The auxiliary will hold its regular meeting this coming Tuesday for the purpose of electing delegates to the National Convention.

Parade Contest By the Aux. Post

The auxiliary will hold its regular meeting this coming Tuesday for the purpose of electing delegates to the National Convention.

Has Taken Over Amoco Station

Owen "Tet" Warren will be in local automobile stores yesterday announced that he has taken over the operation of the Amoco service station at 42 Center street, corner of Henderson road.

New Orleans Treaty Shaky

Cock's statement recalled similar declarations by previous state officials, including French and Spanish colonial governors, who for more than two centuries have sought to suppress New Orleans' naive instinct to take a chance.

No. 4 Co. Changes Plans for Outing

At a special meeting of Hose No. 4 of the Manchester Fire department held last night it was decided to change plans for their outing.

Butler, Noted General, Dies

Provisional second lieutenant in the Marine Corps. He won the first of his many citations for gallantry in the World War.

About Town

Members of the senior League of the South Methodist church requested to come to their meeting tomorrow evening, prepared to tell of some church building or outdoor place of worship which has impressed them.

Public Records

Application for a marriage license has been filed by Peter Rose MacDonald and Charlotte Louise Wilson.

Democrats Name Sub-Committees

In a meeting devoid of debate last night, the Democratic Town Committee approved a list of appointments to sub-committees which was presented by the town chairman, H. Olin Orr.

Epics Chapter Carnival Help Has Been disappointing

The Manchester Veterans' Association carnival is in its second and final week today and has been handicapped somewhat by the weather.

Preparing to Open Girl Scouts' Camp

There are still some openings available at girls who wish to attend the summer camp.

Epics Chapter Carnival Help Has Been disappointing

The Manchester Veterans' Association carnival is in its second and final week today and has been handicapped somewhat by the weather.

Preparing to Open Girl Scouts' Camp

There are still some openings available at girls who wish to attend the summer camp.

Epics Chapter Carnival Help Has Been disappointing

The Manchester Veterans' Association carnival is in its second and final week today and has been handicapped somewhat by the weather.

Preparing to Open Girl Scouts' Camp

There are still some openings available at girls who wish to attend the summer camp.

Epics Chapter Carnival Help Has Been disappointing

The Manchester Veterans' Association carnival is in its second and final week today and has been handicapped somewhat by the weather.

MORIARTY BROS.

301-315 CENTER ST. AT BROAD TEL. 5500

TRADE-IN DAY AT CAMPBELL'S

Your Old Lawnmower, \$4.75 up

TRADE-IN Your Old Bicycle Liberal Allowance

TRADE-IN Your Old Tires Good Allowance

Campbell's Service Station

Auto Inspection Starts Monday. BE PREPARED—SEE US TODAY!

Portrait of a Lady

Getting Dinner

Circle Theatre

The Young Idea

Circle Theatre

The Young Idea

STATE MANAGER

SUNDAY - MONDAY

Circle Theatre

The Young Idea

STATE MANAGER

SUNDAY - MONDAY

Circle Theatre

The Young Idea

STATE MANAGER

SUNDAY - MONDAY

Circle Theatre

The Young Idea

STATE MANAGER

SUNDAY - MONDAY

Circle Theatre

The Young Idea

Pontiac

Special Six-Door Touring Sedan, as illustrated, \$3350

Ticket to Hollywood

BY W. H. PEARS

Out of character... FRANCIS WESTON... GURRY GAIN... FRANKIE FENNEY... Monday: When Francis returns to ride with him, Gusty picks up a hitchhiker...

Francis tried to scream. No sound came from her throat. She lay with her eyes fixed on the prowler, unable to move. Her heart thumped wildly in her chest.

When she opened her eyes, she found the man on the floor. He was dead. She heard the muffled intake of his breathing.

When she opened her eyes, she found the man on the floor. He was dead. She heard the muffled intake of his breathing.

When she opened her eyes, she found the man on the floor. He was dead. She heard the muffled intake of his breathing.

When she opened her eyes, she found the man on the floor. He was dead. She heard the muffled intake of his breathing.

When she opened her eyes, she found the man on the floor. He was dead. She heard the muffled intake of his breathing.

When she opened her eyes, she found the man on the floor. He was dead. She heard the muffled intake of his breathing.

When she opened her eyes, she found the man on the floor. He was dead. She heard the muffled intake of his breathing.

When she opened her eyes, she found the man on the floor. He was dead. She heard the muffled intake of his breathing.

MANCHESTER BUSINESS

Francis Weston... Gurry Gain... Frankie Fenney... Monday: When Francis returns to ride with him, Gusty picks up a hitchhiker...

Francis tried to scream. No sound came from her throat. She lay with her eyes fixed on the prowler, unable to move. Her heart thumped wildly in her chest.

When she opened her eyes, she found the man on the floor. He was dead. She heard the muffled intake of his breathing.

When she opened her eyes, she found the man on the floor. He was dead. She heard the muffled intake of his breathing.

When she opened her eyes, she found the man on the floor. He was dead. She heard the muffled intake of his breathing.

When she opened her eyes, she found the man on the floor. He was dead. She heard the muffled intake of his breathing.

When she opened her eyes, she found the man on the floor. He was dead. She heard the muffled intake of his breathing.

When she opened her eyes, she found the man on the floor. He was dead. She heard the muffled intake of his breathing.

When she opened her eyes, she found the man on the floor. He was dead. She heard the muffled intake of his breathing.

When she opened her eyes, she found the man on the floor. He was dead. She heard the muffled intake of his breathing.

T. P. Holloran FUNERAL HOME... 175 Center St. Phone 3060

Frank W. Adams... 137 Spruce St. Tel. 5890

HAVE YOUR CAR THOROUGHLY GREASED... Adamy Service Station

HIGH GRADE PRINTING... JOB AND COMMERCIAL PRINTING

OLSON MOTOR SALES... Distributor Chrysler and International Harvestor Trucks

ANTIQUE RESTORATION... Complete Line of Fabrics

Cruiser Wichita At Rio de Janeiro... Rio de Janeiro, June 22-29

Manchester Laundry... 73 Maple St. Tel. 5416

STATE TAILOR SHOP... 10 Birch Street

For U. S.: World's Greatest Navy?... BATTLESHIPS

Frank W. Adams... 137 Spruce St. Tel. 5890

HAVE YOUR CAR THOROUGHLY GREASED... Adamy Service Station

HIGH GRADE PRINTING... JOB AND COMMERCIAL PRINTING

OLSON MOTOR SALES... Distributor Chrysler and International Harvestor Trucks

ANTIQUE RESTORATION... Complete Line of Fabrics

Cruiser Wichita At Rio de Janeiro... Rio de Janeiro, June 22-29

Manchester Laundry... 73 Maple St. Tel. 5416

STATE TAILOR SHOP... 10 Birch Street

Finest of Service At Adamy Station... Good will is an intangible but vital asset...

Brush Your Permanent... WE CARRY A COMPLETE LINE OF VACATION NEEDS

Weldon Beauty Salon... Hotel Sheridan Building - Street Entrance

COMPIETE BUILDING SERVICE... COAL - FUEL OILS

PAINTING... JOHNSON PAINT CO.

AUTO GLASS... BROKE AUTO GLASS WINDOWS ARE DANGEROUS...

G. E. WILLIS & SON, INC. Complete Line of BUILDING MATERIALS

HOT WATER... Plenty of it for every purpose at an economical price

WILLIAM H. SCHIEDEL... 135 Spruce St. Tel. 3890

LAUNDRY PROVIDES Time for Leisure... Pity the poor woman who has to bend over the wash tub...

SEE FOR YOURSELF! MORE POWER... You can go over your car through service...

COOK'S SERVICE STA. Manchester Green Phone 8996

MISS ANNE O'NEILL... 200 W. Main St. Tel. 5175

COLLISION REPAIRS... BRAITHWAITE 52 Pearl Street

WINTER'S AUTO BODY CO. 166 W. Middle Tp. Tel. 6700

Be Sure With Goodrich Gas... VAN'S SERV. STATION 42 Hartford St. Tel. 3888

MOVING... LOCAL AND LONG DISTANCE

The Manchester Building & Loan Association, Inc. 203 MAIN ST. MANCHESTER

Move to Curb Auto Speeders

To Suspend Licenses for 30 Days for Second Violation of Law.

Hartford, June 22—In order to impress drivers with the seriousness of a speeding charge, the Motor Vehicle Department today adopted the policy of suspending licenses for 30 days for a second conviction for speeding if it occurs within twelve months of the first conviction.

Where fast driving is the issue, violations of the rules of the road will be considered with equanimity by the department and will lead to a suspension in the way," the Commissioner added.

These suspensions of course, relate to a second conviction for speeding or violating the rules of the road within 12 months of the first one and are in addition to the penalties provided by law, but a general provision allows the commissioner to exercise his authority in imposing a suspension or further restriction of the operator's driving privilege.

These suspensions of course, relate to a second conviction for speeding or violating the rules of the road within 12 months of the first one and are in addition to the penalties provided by law, but a general provision allows the commissioner to exercise his authority in imposing a suspension or further restriction of the operator's driving privilege.

These suspensions of course, relate to a second conviction for speeding or violating the rules of the road within 12 months of the first one and are in addition to the penalties provided by law, but a general provision allows the commissioner to exercise his authority in imposing a suspension or further restriction of the operator's driving privilege.

These suspensions of course, relate to a second conviction for speeding or violating the rules of the road within 12 months of the first one and are in addition to the penalties provided by law, but a general provision allows the commissioner to exercise his authority in imposing a suspension or further restriction of the operator's driving privilege.

These suspensions of course, relate to a second conviction for speeding or violating the rules of the road within 12 months of the first one and are in addition to the penalties provided by law, but a general provision allows the commissioner to exercise his authority in imposing a suspension or further restriction of the operator's driving privilege.

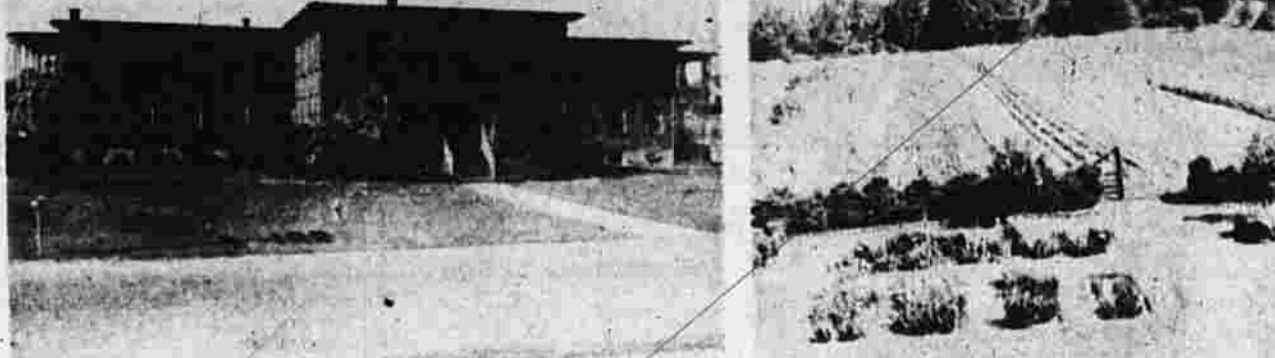
These suspensions of course, relate to a second conviction for speeding or violating the rules of the road within 12 months of the first one and are in addition to the penalties provided by law, but a general provision allows the commissioner to exercise his authority in imposing a suspension or further restriction of the operator's driving privilege.

These suspensions of course, relate to a second conviction for speeding or violating the rules of the road within 12 months of the first one and are in addition to the penalties provided by law, but a general provision allows the commissioner to exercise his authority in imposing a suspension or further restriction of the operator's driving privilege.

These suspensions of course, relate to a second conviction for speeding or violating the rules of the road within 12 months of the first one and are in addition to the penalties provided by law, but a general provision allows the commissioner to exercise his authority in imposing a suspension or further restriction of the operator's driving privilege.

Manchester Almshouse Provides Pleasant, Hygienic Care of the Town Poor

View of the farm garden, shown at right (top) section in the women's and men's recreation room.



The Manchester almshouse, located at 231 Middle Turnpike East (top left) is efficiently managed by Superintendent and Matron, Mrs. Ernest R. Peterson. A view of the farm garden, shown at right (top) section in the women's and men's recreation room, are shown at bottom (left to right).

The Manchester almshouse, located at 231 Middle Turnpike East (top left) is efficiently managed by Superintendent and Matron, Mrs. Ernest R. Peterson. A view of the farm garden, shown at right (top) section in the women's and men's recreation room, are shown at bottom (left to right).

The Manchester almshouse, located at 231 Middle Turnpike East (top left) is efficiently managed by Superintendent and Matron, Mrs. Ernest R. Peterson. A view of the farm garden, shown at right (top) section in the women's and men's recreation room, are shown at bottom (left to right).

The Manchester almshouse, located at 231 Middle Turnpike East (top left) is efficiently managed by Superintendent and Matron, Mrs. Ernest R. Peterson. A view of the farm garden, shown at right (top) section in the women's and men's recreation room, are shown at bottom (left to right).

The Manchester almshouse, located at 231 Middle Turnpike East (top left) is efficiently managed by Superintendent and Matron, Mrs. Ernest R. Peterson. A view of the farm garden, shown at right (top) section in the women's and men's recreation room, are shown at bottom (left to right).

The Manchester almshouse, located at 231 Middle Turnpike East (top left) is efficiently managed by Superintendent and Matron, Mrs. Ernest R. Peterson. A view of the farm garden, shown at right (top) section in the women's and men's recreation room, are shown at bottom (left to right).

The Manchester almshouse, located at 231 Middle Turnpike East (top left) is efficiently managed by Superintendent and Matron, Mrs. Ernest R. Peterson. A view of the farm garden, shown at right (top) section in the women's and men's recreation room, are shown at bottom (left to right).

The Manchester almshouse, located at 231 Middle Turnpike East (top left) is efficiently managed by Superintendent and Matron, Mrs. Ernest R. Peterson. A view of the farm garden, shown at right (top) section in the women's and men's recreation room, are shown at bottom (left to right).

The Manchester almshouse, located at 231 Middle Turnpike East (top left) is efficiently managed by Superintendent and Matron, Mrs. Ernest R. Peterson. A view of the farm garden, shown at right (top) section in the women's and men's recreation room, are shown at bottom (left to right).

AMSTON LAKE "Maine In Connecticut"

20 miles from Manchester—in unspoiled scenic beauty nestles the "Lake in the Hills."

557 feet above sea level and fed by bubbling springs. "Swim In Drinking Water" This unusual community is comparable with the Maine woods. You can buy a lot and have a cottage or cabin built according to your design for \$300.00 Down

10 to 15 years to pay the balance. The F. H. A. makes this possible. Lots \$190 and up—On Your Own Easy Terms. A restricted development with all improvements.

AMSTON LAKE Amston, Connecticut Located Between Colchester and Hebron on Route 85

AMSTON LAKE Amston, Connecticut Located Between Colchester and Hebron on Route 85

AMSTON LAKE Amston, Connecticut Located Between Colchester and Hebron on Route 85

AMSTON LAKE Amston, Connecticut Located Between Colchester and Hebron on Route 85

AMSTON LAKE Amston, Connecticut Located Between Colchester and Hebron on Route 85

AMSTON LAKE Amston, Connecticut Located Between Colchester and Hebron on Route 85

AMSTON LAKE Amston, Connecticut Located Between Colchester and Hebron on Route 85

AMSTON LAKE Amston, Connecticut Located Between Colchester and Hebron on Route 85

The Manchester Electric Division... KEEP FOODS FRESH FOR 6 HOURS... I'M NOT SO SMALL! I'M BIG ELECTRICALLY!

News From Manchester's Neighbors

C. E. Nettleton Award Goes to Martin Fagan

Miss Myrtle Brendel is winner of the C. E. Nettleton award for the year 1939-40. She is a member of the Rockville High School and was awarded the award for her excellent work in the school. The award is presented annually to the student who has shown the most promise and achievement in her studies.

Tolland

Miss Helen Frankish has resigned her position as principal of the Rockville Memorial school in Tolland. She will be succeeded by Miss Helen Frankish. The school is one of the best in the district and has a high reputation for its educational work.

Kemp's Camera Contest

The Kemp's Camera Contest is now open for entries. The contest is for amateur photographers and is held annually to promote the art of photography. Entries should be sent to the contest committee by a certain date.

Andover

Local Boxer Slated to Face Jackie Kent of Bristol at Outdoor Arena; Other Bout Set. Jackie Kent, a local boxer, is scheduled to fight Jackie Kent of Bristol at an outdoor arena. The bout is expected to be a close one and will attract a large crowd.

Church School Opens July 1

For the 14th consecutive season, the Church Vacation school will be held in the main street church, which will open Monday, July 1, and continue for three weeks. It is believed this is a record in this state. The school is held during the summer months and is a popular feature of the church's year.

Ellington

At the annual meeting of the Ladies Auxiliary of the Methodist church in Ellington, the following officers were elected for the coming year. The meeting was held at the home of Mrs. Rose Downes and was a successful one.

Bolton Notch

Mr. and Mrs. Fred Mannel of Bolton, Conn., are expected to arrive in the city on Monday. They are on their way to visit their family and friends in the city.

Wapping

A meeting of the Highway Traffic Committee will be held at the home of Mrs. W. W. Grant on Monday. The committee is concerned with the safety of the roads in the area.

Marlborough

Services at the Vermont Methodist church will be held each Sunday at 9:30. The church is one of the oldest in the state and has a long history of service to the community.

Comics in Serious Confab

Gunten, Switzerland—Three Swiss soldiers told a lady who was visiting them that they were bored with their military life. They were in a serious confab about the situation and how they could improve it.

Large Delegation For State Parley

Plans are being made to have the largest delegation of members of the Anderson-Shaw Post, Veterans of Foreign Wars, to the state parley. The parley is held annually and is a major event for the organization.

Fireworks Fund

All townpeople who wish to enroll for the course in typewriting should do so by a certain date. The course is a popular one and is held at the high school.

Boy Scout Council Holds Camporal

The Hartford Council, Boy Scouts of America, is conducting a camporal at Camp Pioneer. The camporal is a week-long event where scouts learn various skills and have fun.

Pa's, West Sides Play Home Tilts Tomorrow

The Philadelphia Athletics and the St. Louis Cardinals are scheduled to play home games tomorrow. Both teams are expected to put up a good fight.

South Coventry

Plans for an anniversary sale and supper in observance of the 47th birthday of the Ladies Missionary Association of the Congregational church will be held on Wednesday afternoon. The event is a social one and will be well attended.

Public Leaders

By The Associated Press. National League: Danning-Danning, 333; National League: Danning-Danning, 333; National League: Danning-Danning, 333.

League Leaders

By The Associated Press. National League: Danning-Danning, 333; National League: Danning-Danning, 333; National League: Danning-Danning, 333.

Public Leaders

By The Associated Press. National League: Danning-Danning, 333; National League: Danning-Danning, 333; National League: Danning-Danning, 333.

Public Leaders

By The Associated Press. National League: Danning-Danning, 333; National League: Danning-Danning, 333; National League: Danning-Danning, 333.

Public Leaders

By The Associated Press. National League: Danning-Danning, 333; National League: Danning-Danning, 333; National League: Danning-Danning, 333.

Public Leaders

By The Associated Press. National League: Danning-Danning, 333; National League: Danning-Danning, 333; National League: Danning-Danning, 333.

Public Leaders

By The Associated Press. National League: Danning-Danning, 333; National League: Danning-Danning, 333; National League: Danning-Danning, 333.

Public Leaders

By The Associated Press. National League: Danning-Danning, 333; National League: Danning-Danning, 333; National League: Danning-Danning, 333.

Public Leaders

By The Associated Press. National League: Danning-Danning, 333; National League: Danning-Danning, 333; National League: Danning-Danning, 333.

Public Leaders

By The Associated Press. National League: Danning-Danning, 333; National League: Danning-Danning, 333; National League: Danning-Danning, 333.

West Sides Upset Moriarty by 1-9 to Tie for Two Lead

Indians Trounce the Red Sox, 7-4

Cy Blanchard's Record Stamps Him As High's Greatest Pitching Star

Yankees Break Losing Streak, Blast Bengals

The Cleveland Indians are leading the American League with a record of 22 wins and 10 losses. They are tied for the lead with the St. Louis Cardinals. The Indians' pitching staff is one of the best in the league, and they are expected to continue their winning ways.

Sprint Tussle Features NCAA Track Program

The National Collegiate Athletic Association (NCAA) track program is set to begin in Minneapolis, Minn., on June 27. The program will feature a variety of track and field events and is expected to be a highly competitive one.

Swain Hurls 234 2-3 Innings, Gives 163 Hits, Fans 229, Passes 55 to Top

Swain has averaged in his brilliant career as a schoolboy pitcher and his record stamps him as the most effective and dependable pitcher in the country. He has a record of 234 2-3 innings, 163 hits, and 229 runs.

5-Run Barrage in 6th Earns Pagan Victory

Borello and Blanchard were victims of Pagan's batting in last inning after Gas Houssers lead by 9-6. Pagan's 5-run barrage in the 6th inning earned him the victory. The game was a close one and was well attended.

Sid Hudson Hurls One-Bitter for Nats Over Brewers; Dodgers Win As Giants Defeat Reds

Sid Hudson hurls one-bitter for the Nationals over the Brewers. The Dodgers win as the Giants defeat the Reds. The game was a close one and was well attended.

Standings

Team	W	L	Pct.
Indians	22	10	.688
Cardinals	22	10	.688
Red Sox	18	14	.563
Pirates	17	15	.529
Yankees	16	16	.500

Box Score

Team	R	H	E
Indians	7	10	2
Red Sox	4	10	3
Pirates	1	10	2
Yankees	1	10	2

Box Score

Team	R	H	E
Indians	7	10	2
Red Sox	4	10	3
Pirates	1	10	2
Yankees	1	10	2

Danning Cops Batting Lead

The Danning Cops are leading the league in batting. They have a batting average of .300 and are expected to continue their success. The team is one of the best in the league and is well coached.

Harry the Horse Regains First Place in National

Harry the Horse has regained first place in the National. He has won several races and is expected to continue his success. He is a highly trained horse and is well cared for.

Harvard Crew Drubs Yale By 8 Lengths on Thames

The Harvard crew has drubbed Yale by 8 lengths on the Thames. The race was a close one and was well attended. Harvard's crew is one of the best in the country and is well coached.

Yankee Power Not Clicking

The Yankees' power is not clicking. They are struggling in the league and are expected to have a difficult season. The team is one of the best in the league but is not performing well.

Yankee Power Not Clicking

The Yankees' power is not clicking. They are struggling in the league and are expected to have a difficult season. The team is one of the best in the league but is not performing well.

Yankee Power Not Clicking

The Yankees' power is not clicking. They are struggling in the league and are expected to have a difficult season. The team is one of the best in the league but is not performing well.

Yankee Power Not Clicking

The Yankees' power is not clicking. They are struggling in the league and are expected to have a difficult season. The team is one of the best in the league but is not performing well.

Yankee Power Not Clicking

The Yankees' power is not clicking. They are struggling in the league and are expected to have a difficult season. The team is one of the best in the league but is not performing well.

Yankee Power Not Clicking

The Yankees' power is not clicking. They are struggling in the league and are expected to have a difficult season. The team is one of the best in the league but is not performing well.

Yankee Power Not Clicking

The Yankees' power is not clicking. They are struggling in the league and are expected to have a difficult season. The team is one of the best in the league but is not performing well.

Yankee Power Not Clicking

The Yankees' power is not clicking. They are struggling in the league and are expected to have a difficult season. The team is one of the best in the league but is not performing well.

Yankee Power Not Clicking

The Yankees' power is not clicking. They are struggling in the league and are expected to have a difficult season. The team is one of the best in the league but is not performing well.

25% Discount from List Price on Standard Tires

Here is long, dependable mileage, with scientifically designed tread for protection against skidding and slide-slips.

STANDARD TIRES. Here is long, dependable mileage, with scientifically designed tread for protection against skidding and slide-slips.

